



OP-55 Pneumatic Chain Pin Cleaner

DESCRIPTION

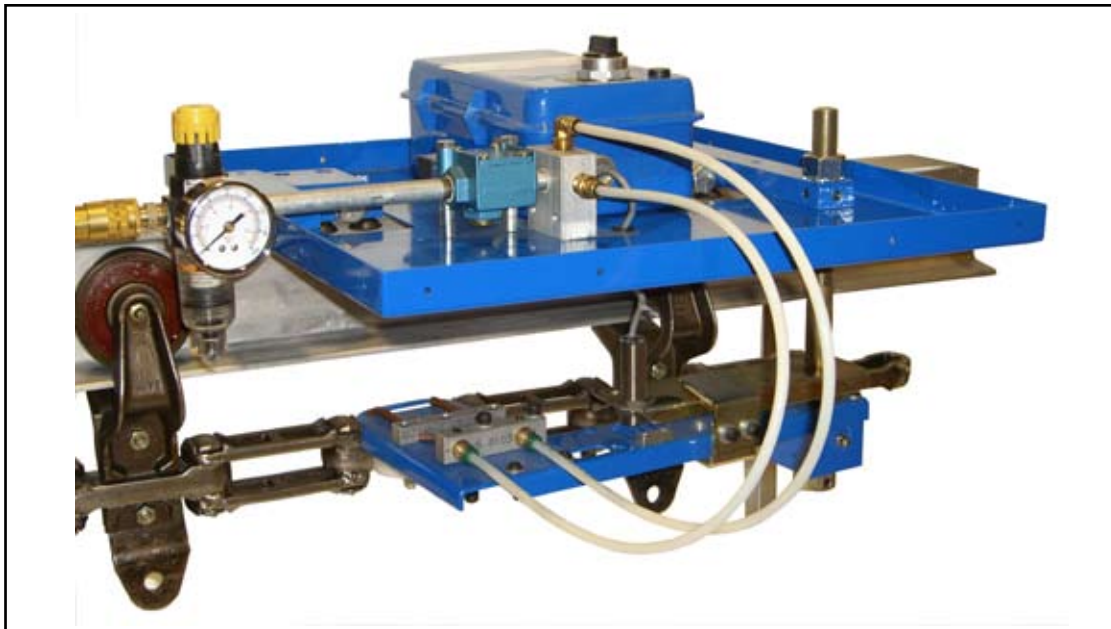
The OP-55 Pneumatic Chain Pin Cleaner is an effective and low-cost cleaning system for Overhead and Inverted Rivetless Chain applications.

The OP-55 Pneumatic Chain Pin Cleaner is equipped with an electrical junction enclosure with a three (3) position control switch, air control solenoid valve, air pressure control regulator, and an adjustable precision arm.

SPECIFICATIONS	
Operating Temperature	40°F to 125°F (4°C to 52°C)
Pressure Range	0-150 psi (1034 kPa)
Electrical	115 VAC, 50/60Hz
In-rush	14.7 volt-amperes (0.12 amp)
Seal	10.4 volt-amperes (0.09 amp)
Net Weight	35 lbs (15.9 kg)

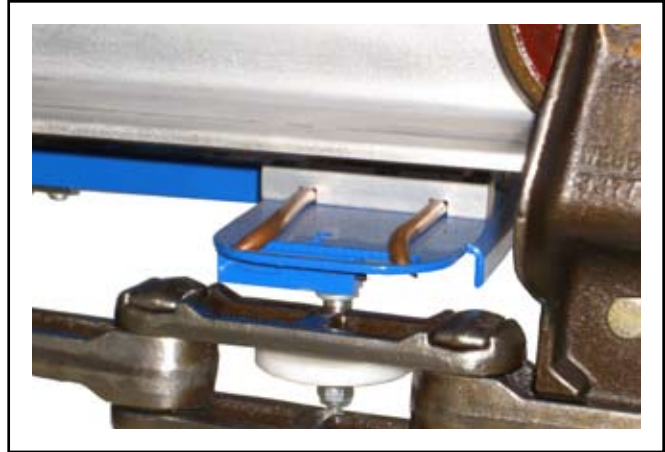
FEATURES

- Available for operation on standard 115 VAC or 230 VAC, 50 Hz or 60 Hz
- The simple and reliable Precision Arm positions the cleaning nozzles in the critical and hard-to-reach chain wear areas where dirt build-up can occur
- Non-contact positive switching sensor
- Clamp-on mounting feature for overhead system installation; no welding required
- Can be interfaced with existing or anticipated conveyor maintenance equipment
- Three (3) position selector switch with manual override
- 36in long Neoprene rubber curtain for improved safety and easier housekeeping (easily cut to fit specific needs)



OPERATION

- Precision Arm Roller locates on center link of rivetless chain
- Precision Arm engages chain when side link is present
- Control switch closes
- Air control solenoid valve is energized
- Pressurized air is delivered to critical chain wear areas

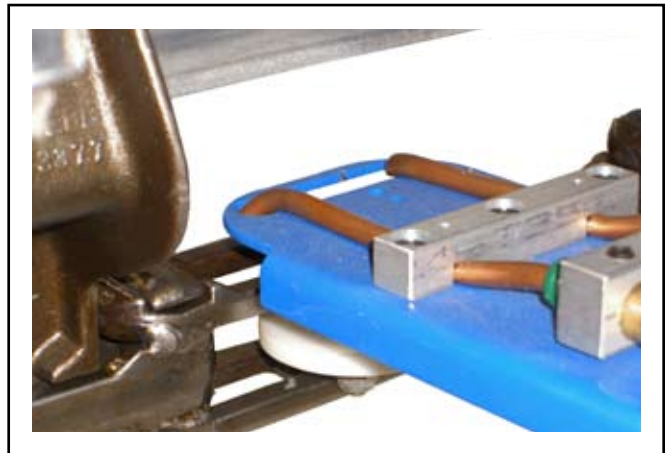
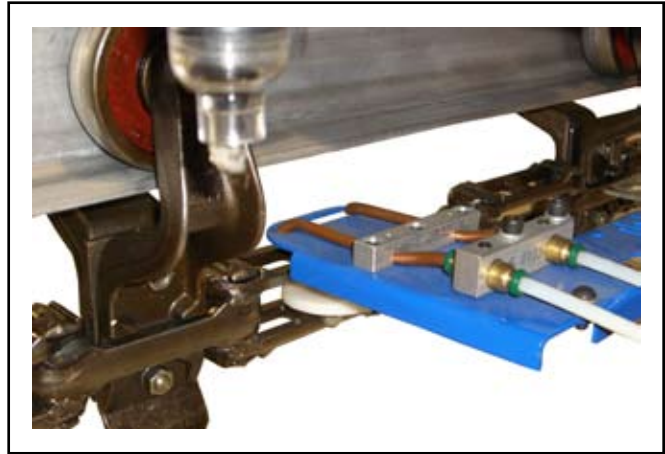


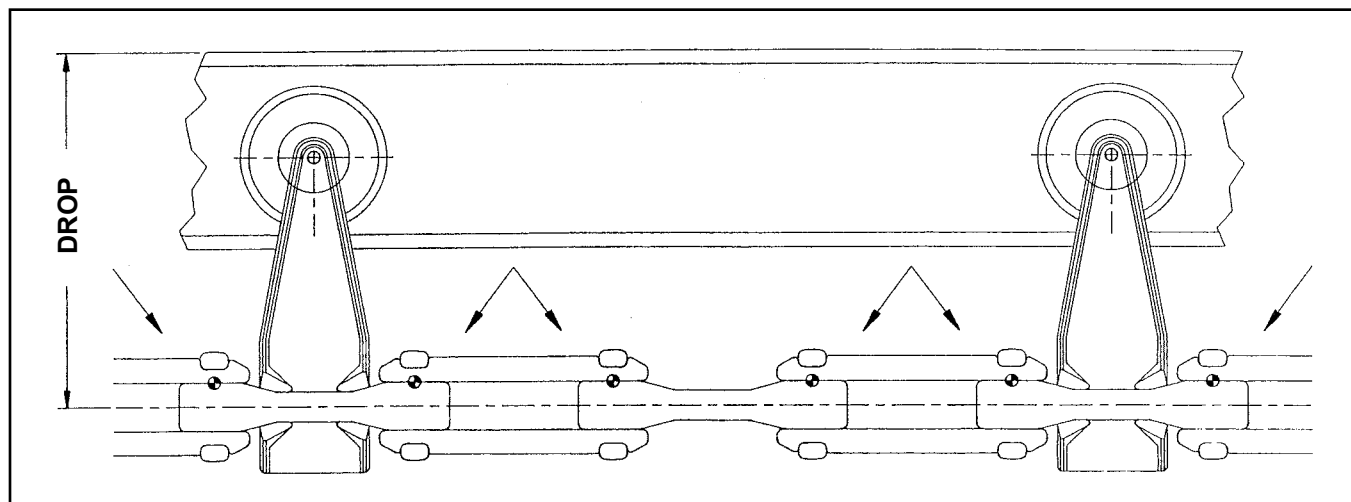
INSTALLATION INSTRUCTIONS

- Mount OP-55 unit upstream from chain pin oiling station, where chain runs smooth and cleaner at least three feet (3') from any turn (horizontal or vertical)
- Clamp unit to I-Beam (overhead system, 18in length required) or weld unit in place (inverted system)
- Adjust Precision Arm roller to track on center line of chain
- Adjust positive switching sensor to close at the inward limit of travel of the Precision Arm in the engaged position
- Adjust nozzle tips to direct air to the chain wear areas
- Connect plant air supply to the unit
- Make necessary electrical connections

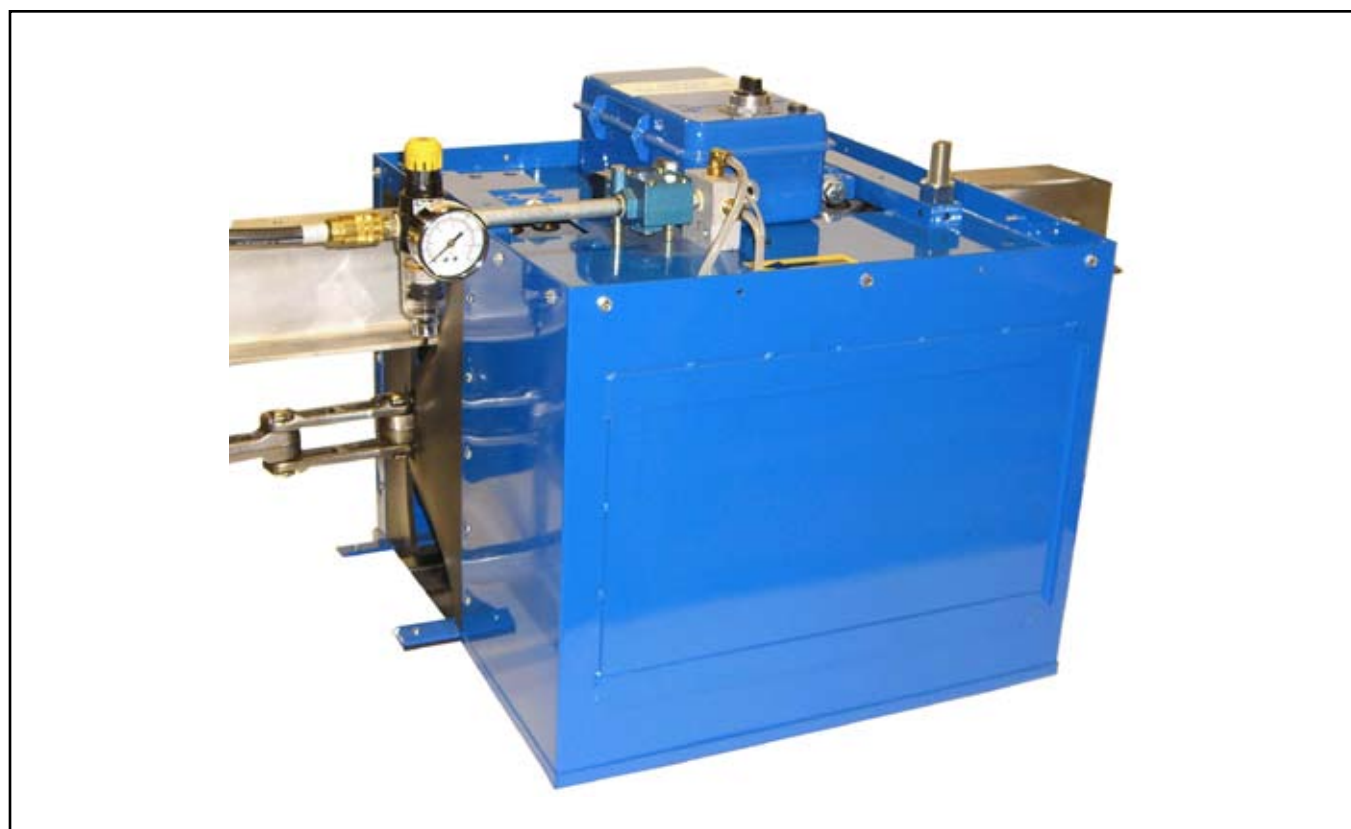
Note: To prevent possible damage to the OP-55, electrical power to the unit must be supplied only when the conveyor is running forward. Electrical power **MUST** be removed from the unit when the conveyor is stopped or running in reverse.)

Options: Totally Enclosed Assembly Metal Shroud

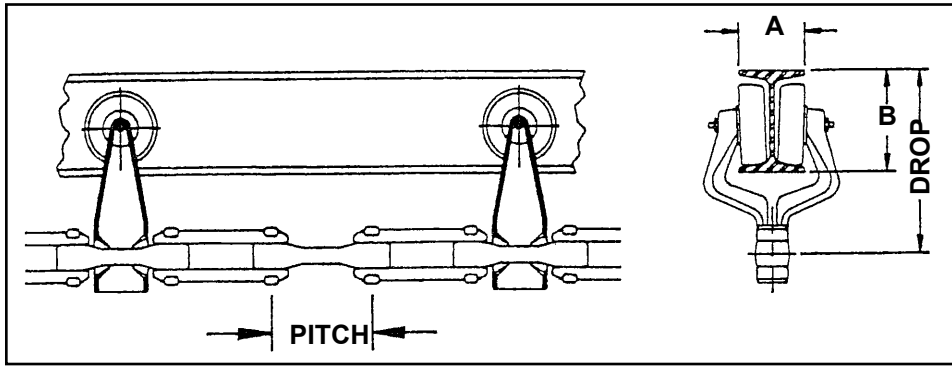




⊕ Indicates Desired Cleaning Area



OP55 Shown with Optional Totally Enclosed Shroud Assembly



CHAIN PITCH / SIZE:	X-348	X-458	X-658	X-678	OTHER	A _____
(CIRCLE ONE - IF OTHER, PLEASE SPECIFY AND COMPLETE DIMENSIONS "C" THROUGH "M")						B _____
CHAIN DROP:	_____					C _____
I-BEAM SIZE:	_____ INCHES (MM) x _____		_____ LB/FT			D _____
CHAIN PIN DIAMETER:	_____					E _____
PLANT UTILITIES:	_____ VOLTS	_____ Hz	_____ PSI (AIR)			F _____
AMBIENT TEMPERATURE AT CLEANER:	_____					G _____
CONVEYOR TEMPERATURE:	_____					H _____
CONVEYOR SPEED RANGE:	_____ TO _____					I _____
CATCH PAN REQUIRED:	_____ YES:	_____ NO:				J _____
(SOLD SEPARATELY)						K _____
						L _____
						M _____

